

MPI aware routing using SDN

Siddharth Bhatia, Yash Sinha, G S S Chalapathi, Rajiv Kumar

Birla Institute of Technology & Science, India

ABSTRACT

Among the factors that determine the performance of a computationally intensive application running on a high-performance computing (HPC) system, communication between processes is vital. The fundamental idea behind optimizing Message Passing Interface (MPI) communications is to maximize the utilization of the network of the cluster system, by deploying the Software Defined Networking (SDN) paradigm. We identify two primary issues: overuse of shortest paths leaving them choked and dynamically un-optimized path selection SDN will be used to leverage dynamic routing to avoid contention. In this paper, we present an application-aware network routing mechanism specifically for enhancing MPI applications with the help of an adaptive routing algorithm.

Keywords

Message Passing Interface (MPI), Software Defined Networks (SDN), Routing

1. INTRODUCTION

High performance computing (HPC) systems enable users to solve large scale, complex and computationally expensive problems. The system is implemented as a cluster system which is essentially a group of multiple computers (nodes) integrated together via a network (interconnect).

Message Passing Interface (MPI) [3] [8] has been the standard specification for message passing programming required in computing programs that run on cluster systems. The various communication mechanisms can be coarsely classified into point-to-point communication and collective communication. It has been concluded that most of the applications largely use collective communication during their execution [7]. Therefore, it is crucial to reduce the time spent in collective communication which is directly proportional to performance.

To manage communication between multiple processes, proper manageability and central control of the network is

required which has been boldly proposed in the new network paradigm viz., Software Defined Networking (SDN) [4]. It separates the control plane from the data plane (which are traditionally coupled together) and introduces a centralized controller which pushes proper routing entries in the forwarding elements (erstwhile switches). Further, the controller exposes an interface to interact with other applications (such as an MPI program) that can be used to pull network statistics and push network control. Various researchers have tailored the use of SDN to enhance different network applications [6, 5]. In [9], the authors present a concept of a generic SDN enhanced MPI framework. We extend this concept to formulate a design of MPI aware dynamic routing with the help of SDN controller.

We wish to enhance MPI based HPC systems by leveraging SDN in network routing control to address MPI communication over choked links and dynamically un-optimized paths by optimizing path selection with dynamic network monitoring from the controller as elaborated in the next section. Further, we delineate the use of a specific adaptive routing algorithm in the context of SDN.

2. NETWORK ISSUES IN MPI SYSTEMS

MPI collective operations require much simultaneous communication among multiple process pairs. However, while some computing node pairs communicate less, some pairs have to communicate much more than other pairs. When the underlying network of the cluster system interconnects with the computing nodes there is a possibility of link contention, redundant routing, un-optimized path selection, and many more issues. The communication in MPI uses the network links in various ways but we focus on the following:

1. Using choked links: Suppose a cluster system of 4 computing nodes interconnected with a 2-level Fat-tree topology as shown in Fig. 1. Fat-tree is a network topology that has multiple redundant routes between the upper layer switches and lower layer switches. By scattering traffic among these available routes, it is possible to gain more bandwidth compared with simple tree topology. Exploiting multiple available paths have been investigated and used widely [1], but with SDN design of a new protocol such as MPTCP is not required.

Therefore, for such a setup, the load balancing algorithm becomes important. If two communications are routed within the exact same route, link contention could happen. On the other hand, when two communications are re-routed so that they make use of the

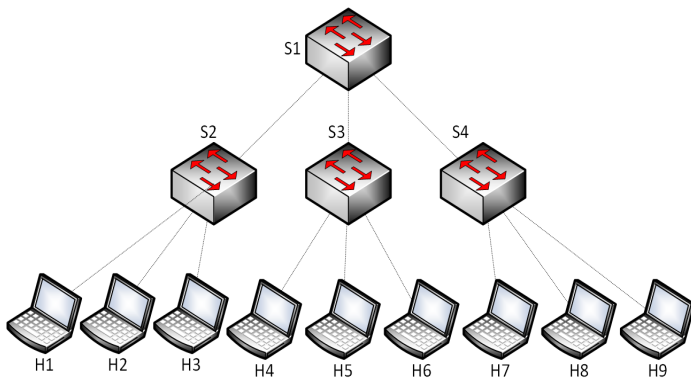


Figure 1: 2-level Fat-tree topology

available routes, link contention can be avoided. Traditionally, this has been achieved with modification of IS-IS/OSPF link weights, but this is viewed "as a significant change to the network that is performed on a relatively coarse timescale" [2]. Hence, this is not suitable for frequent changes, which on the contrary lead to worse situation of flow oscillations. SDN can easily overcome this with frequent rule installations at the switches with the help of the controller.

- Using longer paths: Using the same example as above, the nodes may end up routing packets on un-optimized paths, especially if heuristics are being used to avoid contention and path selection without knowing the global view of the network in real time. In practice, the traffic volumes donot remain static but fluctuate over time, and unexpected failures can result in changes to the network topology. In addition, acquiring an exact estimate of the traffic matrix is difficult [2].

With SDN we can retrieve the network state statistics with help of stats request messages and accordingly provision and re-provision the paths that not only suit the static parameters like path length and capacity but also dynamic parameters like available, bandwidth, link delay etc.

3. METHODOLOGY

The controller is a single computer that configures the network in an MPI application-aware manner. As shown in Fig 2., all the switches are connected with the controller. They are merely responsible for forwarding the packets based on the routes dictated by the controller whereas, the controller implements all the network control logic.

The controller maintains the global topology of the network as an abstract network graph with link weights between the nodes. The controller polls for flow statistics from the switches periodically and estimates link bandwidth and delay to update the link weights in the graph. We use Self-Adaptive Multiple Constraints Routing Algorithm (SAM-CRA) algorithm [10]. At each hop along the path, SAMCRA computes the next hop towards the destination, ignoring the previous path history (as in current IP routing).

At the source switch, the controller determines the path for the flow based on current weights and installs rules in the subsequent switches. The controller keeps an eye on the

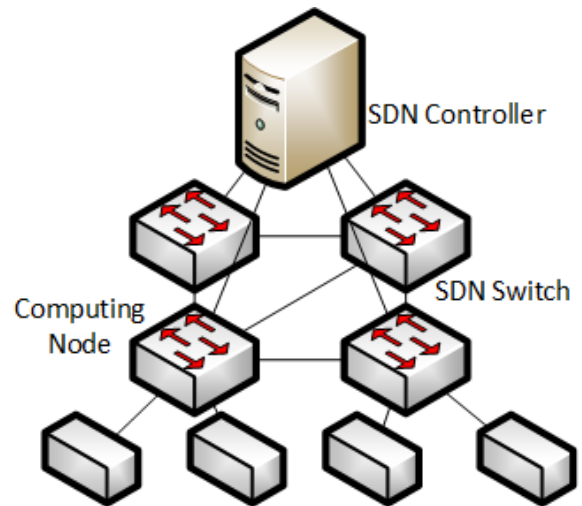


Figure 2: Design

congestion prone areas, and re-provisions paths for flows to avoid congestion. This can enhance all communications viz., point-to-point and collective in MPI.

4. CONCLUSION

In this paper, we present an application-aware network routing mechanism and orchestration using SDN specifically for enhancing MPI applications. The controller monitors the network to collect statistics and provisions congestion free paths for the MPI flows.

5. REFERENCES

- [1] FORD, A., RAICIU, C., HANDLEY, M., AND BONAVENTURE, O. Tcp extensions for multipath operation with multiple addresses. Tech. rep., 2013.
- [2] FORTZ, B., REXFORD, J., AND THORUP, M. Traffic engineering with traditional ip routing protocols. *IEEE communications Magazine* 40, 10 (2002), 118–124.
- [3] GROPP, W., LUSK, E., AND SKJELLUM, A. *Using MPI: portable parallel programming with the message-passing interface*, vol. 1. MIT press, 1999.
- [4] MCKEOWN, N., ANDERSON, T., BALAKRISHNAN, H., PARULKAR, G., PETERSON, L., REXFORD, J., SHENKER, S., AND TURNER, J. Openflow: enabling innovation in campus networks. *ACM SIGCOMM Computer Communication Review* 38, 2 (2008), 69–74.
- [5] NARAYAN, S., BAILEY, S., DAGA, A., GREENWAY, M., GROSSMAN, R., HEATH, A., AND POWELL, R. Openflow enabled hadoop over local and wide area clusters. In *High Performance Computing, Networking, Storage and Analysis (SCC), 2012 SC Companion: (2012)*, IEEE, pp. 1625–1628.
- [6] QIN, P., DAI, B., HUANG, B., AND XU, G. Bandwidth-aware scheduling with sdn in hadoop: A new trend for big data. *IEEE Systems Journal* (2015).
- [7] RABENSEIFNER, R. Automatic mpi counter profiling. In *42nd CUG Conference* (2000), pp. 396–405.
- [8] SCHIKUTA, E. Message-passing-interface-forum: Mpi: A message-passing interface standard. *Techn. Ber., University of Tennessee, Knoxville, Tennessee* (1994).
- [9] TAKAHASHI, K., KHURELTULGA, D., MUNKHDORJ, B., KIDO, Y., DATE, S., YAMANAKA, H., KAWAI, E., AND SHIMOJO, S. Concept and design of sdn-enhanced mpi framework. In *Software Defined Networks (EWSDN), 2015 Fourth European Workshop on* (2015), IEEE, pp. 109–110.
- [10] VAN MIEGHEM, P., DE NEVE, H., AND KUIPERS, F. Hop-by-hop quality of service routing. *Computer Networks* 37, 3 (2001), 407–423.